

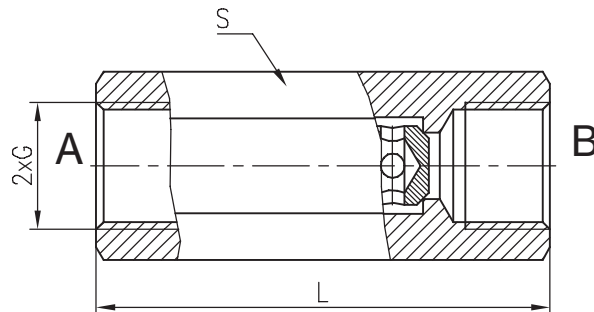
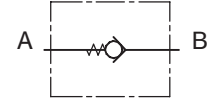


**Hidro  
Pnevmo  
Tehnika**

3, Vojeli St., Kazanlak, Bulgaria  
Tel.: +359 431/ 62 228  
Fax : +359 431/ 62 019  
e-mail : info@hpt-bg.com  
www.hpt-bg.com

## CHECK VALVE

**KO- ..**



Type	$Q_{max}$	$P_{max.}$	Opening pressure of the check valve	L	S	2xG
	L/min	bar				
KO-14	25	320	0,5	60	19	G1/4"
KO-38	25		0,5	60	24	G3/8"
KO-12	40		0,3	75	27	G1/2"

All performances and calibration are carried out by using hydraulic oil with viscosity approx. 46 cSt at 50 °C  
Temperature range: -20°C...+80°C  
Filtration absolute: 63 µm

### ORDERING CODE

**KO-14**

Type

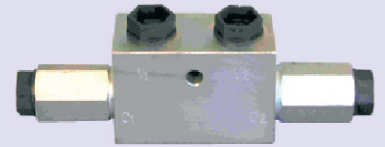
Port threads G: **14,38,12**



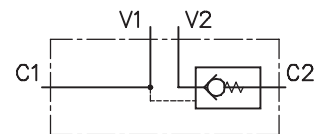
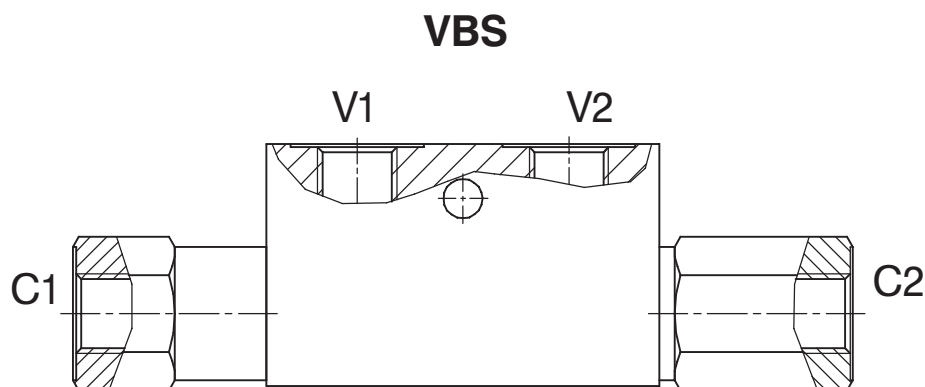
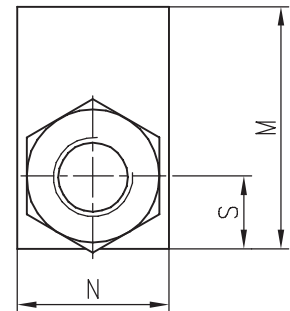
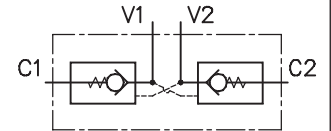
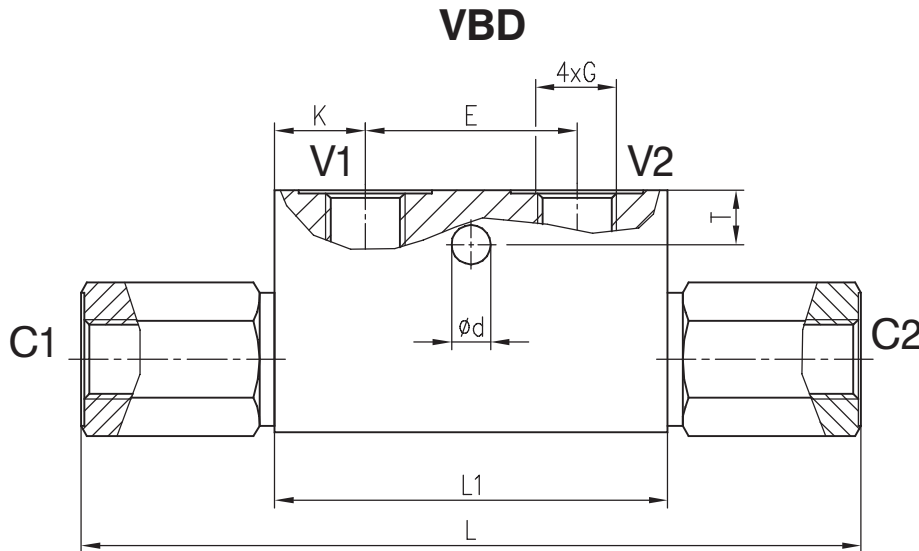
**Hidro  
Pnevmo  
Tehnika**

3, Vojeli St., Kazanlak, Bulgaria  
Tel.: +359 431/ 62 228  
Fax : +359 431/ 62 019  
e-mail : info@hpt-bg.com  
www.hpt-bg.com

## DUAL OR SINGLE PILOT OPERATED CHECK VALVE



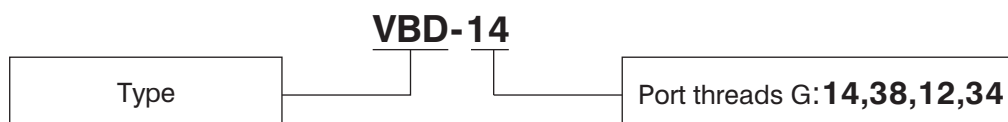
### VBD .. and VBS ..



Type	Q <sub>max</sub>	P <sub>max.</sub>	Pilot ratio	G	L	L1	M	N	S	T	d	K	E
	L/min	bar											
VBD-14(VBS-14)	25	350	4:1	G 1/4	129	65	40	25	12	9	6.5	15	35
VBD-38(VBS-38)	35		4:1	G 3/8	129	65	45	30	15	12	6.5	15	35
VBD-12(VBS-12)	50		4:1	G 1/2	163	79	50	35	16	15	6.5	20.5	38
VBD-34(VBS-34)	100		3,6:1	G 3/4	185	100	60	40	21	15	8.5	25	50

All performances and calibrations are carried out by using hydraulic oil with viscosity approx. 46 cSt at 50 °C  
Temperature range:-20 °C...+80 °C. Filtration absolute: 25 µm

### ORDERING CODE



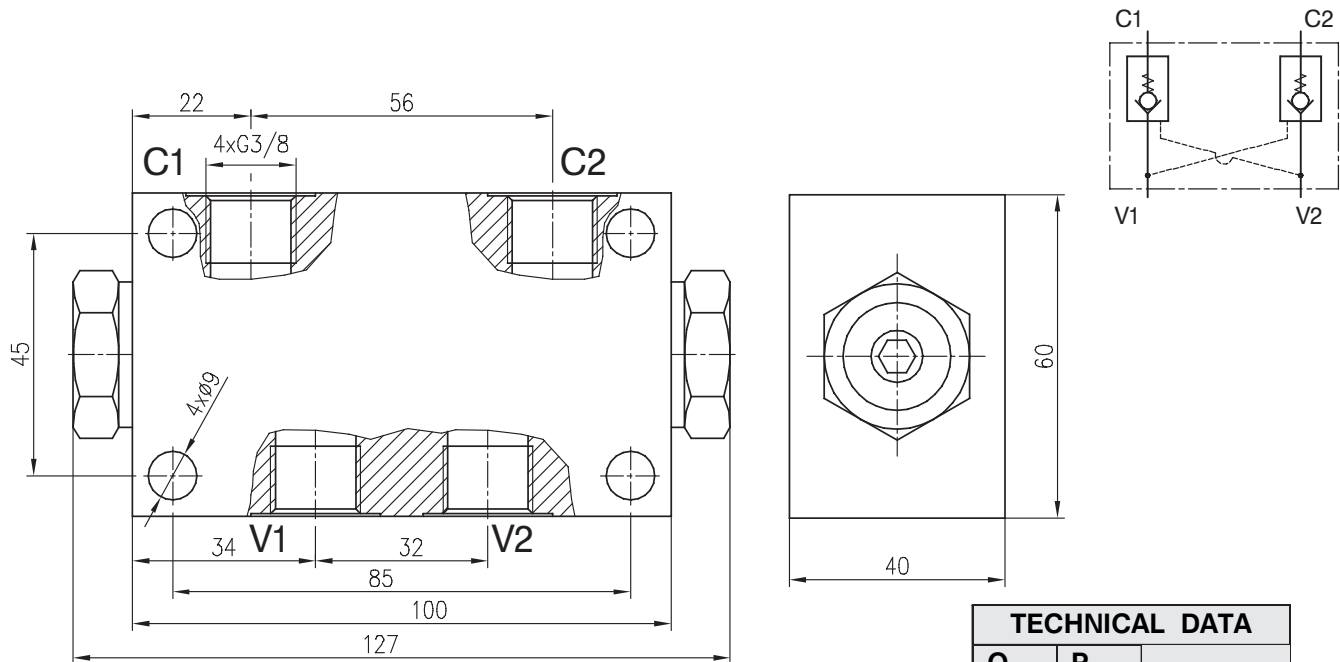


**Hidro  
Pnevmo  
Tehnika**

3, Vojeli St., Kazanlak, Bulgaria  
Tel.: +359 431/ 62 228  
Fax : +359 431/ 62 019  
e-mail : info@hpt-bg.com  
www.hpt-bg.com

## DUAL PILOT OPERATED CHECK VALVE

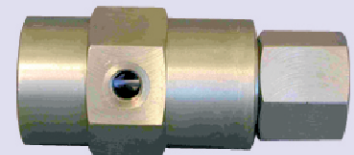
**BP2/10-38**



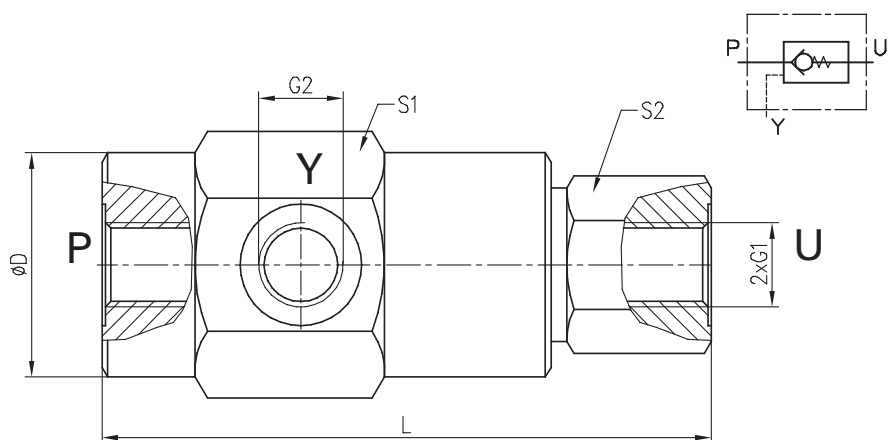
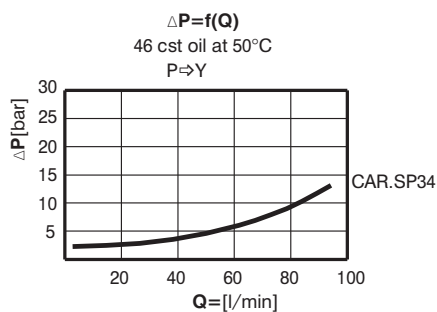
All performances and calibrations are carried out by using hydraulic oil with viscosity Approx. 46 cSt at 50 °C Temperature range:-20 °C... +80 °C. Filtration absolute: 25 µm

TECHNICAL DATA		
Q <sub>max</sub> L/min	P <sub>max.</sub> bar	Pilot ratio
30	350	5:1

## PILOT OPERATED CHECK VALVES, EXTERNAL PILOT OPERATED TYPE, SINGLE ACTING LINE MOUNTING



**CAR.SP ..**



Type	Q <sub>max</sub>	P <sub>max.</sub>	Pilot ratio	G1 <sub>60</sub>	G2	S1	S2	D	L
	L/min	bar		mm		mm	mm		
CAR.SP14	15	400	3.1:1	G1/4	G1/4	36	24	35	95
CAR.SP38	30		3.5:1	G3/8		41	32	40	105
CAR.SP12	45	350	2.8:1	G1/2		46	36	45	115
CAR.SP34	80		3.4:1	G3/4		55	41	54	135

All performances and calibrations are carried out by using hydraulic oil with viscosity approx. 46 cSt at 50 °C. Temperature range:-20 °C... +80 °C. Filtration absolute: 25 µm

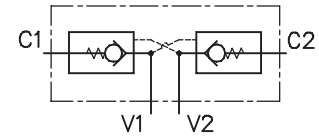
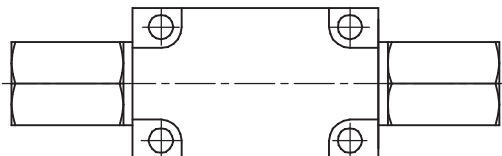
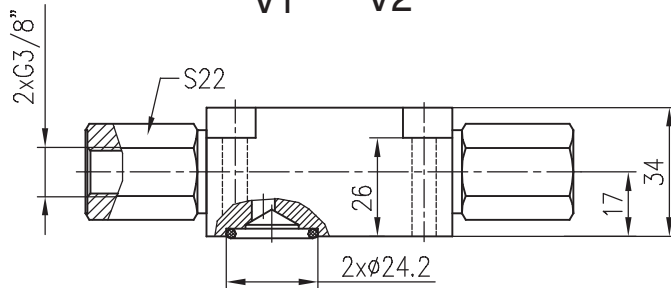
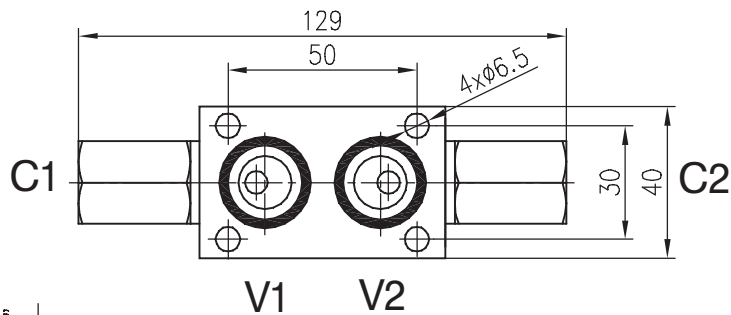


**Hidro  
Pnevmo  
Tehnika**

3, Vojeli St., Kazanlak, Bulgaria  
Tel.: +359 431/ 62 228  
Fax : +359 431/ 62 019  
e-mail : info@hpt-bg.com  
www.hpt-bg.com

## DUAL PILOT OPERATED CHECK VALVE

### VBD-R-38



TECHNICAL DATA		
Maximal pressure	bar	350
Nominal flow rate	L/min	35
Pilot ratio		4:1

All performances and calibration are carried out by using hydraulic oil with viscosity approx. 46 cSt at 50 °C  
Temperature range: -20 °C...+80 °C.  
Filtration absolute: 25µm

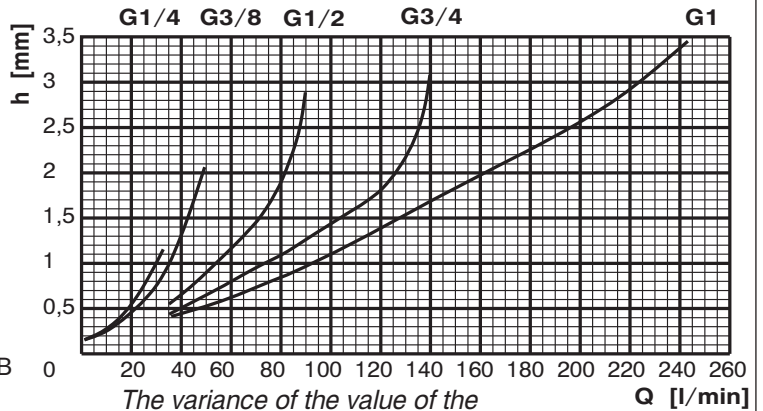
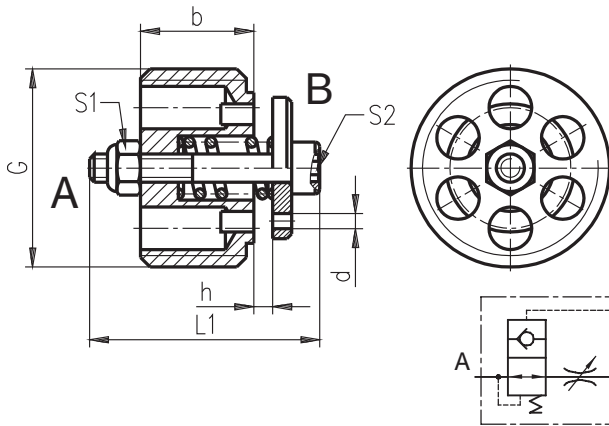


**Hidro  
Pnevmo  
Tehnika**

3, Vojeli St., Kazanlak, Bulgaria  
Tel.: +359 431/ 62 228  
Fax : +359 431/ 62 019  
e-mail : info@hpt-bg.com  
www.hpt-bg.com

## LINE RUPTURE PROTECTION VALVE

**KA .. ..**



The variance of the value of the reported flow from the chart is  $\approx 10\%$

The valve screws to end of the thread in the body. At mounting the side "B" - to internal part of cylinder. Required flow rate Q cl. Is adjusted - by clearance "h"  
All performances and calibration are carried out by using hydraulic oil with viscosity approx. 46 cSt at 50°C  
Temperature range: -20 °C...+80 °C.  
Filtration absolute 63 µm.

Type	Q <sub>max</sub>	P <sub>max.</sub>	G	L1	b	h <sub>max.</sub>	S1	S2
	L/min	bar						
KA .. 14	35	350	G 1/4"	19	8.7	1.2	5.5	2.5
KA .. 38	55		G 3/8"	25	12	2		
KA .. 12	110		G 1/2"	25	12	2.5	7	3
KA .. 34	160		G 3/4"	34	16.5	2.8		
KA .. 1	260		G 1"	34	18.5	3.5		

### ORDERING CODE

**KA 10 14 0.6**

Diameter d [mm] : ...

Without hole : **Omit**

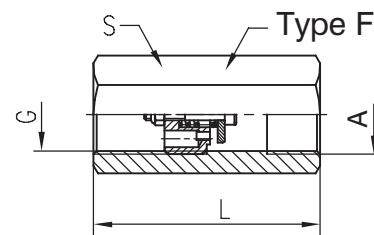
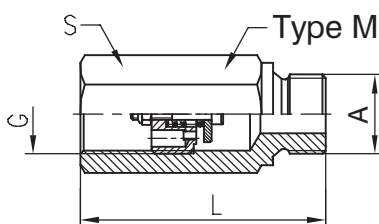
Type

Operating flow rate Q ( l/min)

Threads G : **14,38,12,34**

## BODY FOR LINE RUPTURE PROTECTION VALVE

**KA .. .. / .. ..**



Type	P <sub>max.</sub>	G	L	S	A
	bar		mm	mm	
KA .. 14M..	350	G 1/4"	50	19	G 1/4"
KA .. 38M..		G 3/8"	58	22	G 3/8"
KA .. 12M..		G 1/2"	65	27	G 1/2"
KA .. 34M..		G 3/4"	78	36	G 3/4" M22x1.5

Type	P <sub>max.</sub>	G	L	S	A
	bar		mm	mm	
KA ..14/F..	350	G 1/4"	48	19	G 1/4"
KA ..38/F..		G 3/8"	52	22	G 3/8"
KA ..12/F..		G 1/2"	60	27	G 1/2"
KA ..34/F..		G 3/4"	72	36	G 3/4" M22x1.5

### ORDERING CODE

Type

**KA 20 14/ F 14**

Threads A : **14,38,12,34**

Operating flow rate Q ( l/min)

Threads G : **14,38,12,34**

Type : **M,F**

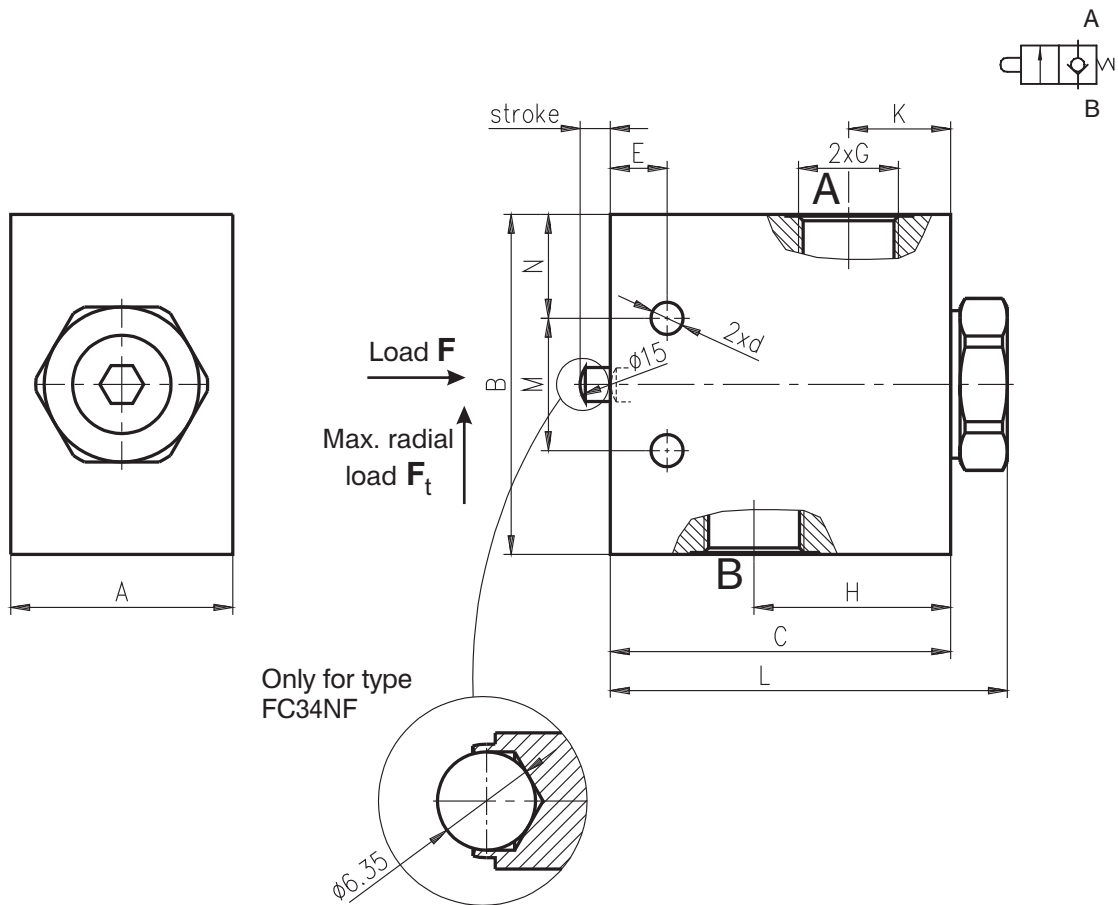
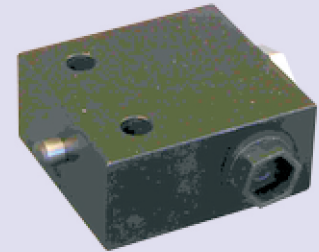


**Hidro  
Pnevmo  
Tehnika**

3, Vojeli St., Kazanlak, Bulgaria  
Tel.: +359 431/ 62 228  
Fax : +359 431/ 62 019  
e-mail : info@hpt-bg.com  
www.hpt-bg.com

## LIMIT SWITCH

**FC .. NF**



Type	Q <sub>max.</sub>	P <sub>max.</sub>	max.Load		L	A	B	C	M	N	E	K	H	2xG	2xd	stroke
	l/min	bar	F [N]	F' [N]	mm	mm	mm	mm	mm	mm	mm	mm	mm			mm
FC38NF	30	350	F=11,5.P/bar/	80	71	30	60	65	35	12,5	15	18	32,5	G3/8"	8,5	8,5±1
FC12NF														G1/2"		8,5±1
FC34NF														G3/4"		8±1

All performances and calibration are carried out by using hydraulic oil with viscosity approx. 46 cSt at 50 °C  
Temperature range: -20 °C...+80 °C.Filtration absolute: 20 µm

### ORDERING CODE

